

RESULTS

Our numbers are very small and therefore results will vary enormously from year to year depending on the ability and motivation of the pupils on roll. The school is registered with the Joint Council on Examinations and is able to offer the full range of appropriate qualifications.

	Number of year 11's completing	5 GCSE (or equiv) A* - C	5 GCSE (or equiv) A* - G	1+ GCSE (or equiv) A* - G	Other Qualifications
2009	3			2 4 A* - G 1 2 A* - G	2 X 3 ELCs 2 X ASDAN Bronze
2010	2			2 (1, 4A - G & 1 1A* - C)	Unit Awards
2011	4			4	
2012	5	3	1	1 (3 A* - G)	BTEC Unit
2013	3	1	0	1 (4 A* - D)	BTEC Unit
2014	5	0	2	1 (2 A*-C)	3 FSK L1 Eng 1 FSK L2 Eng 1 FSK L1 Ma 2 BTEC Level 1 Construction AQA Unit Awards BTEC units.
2015	4			1(2 A*-C) 1(1 A-G)	2X 1FSC 1(15 AQA Unit Awards) 1(19 AQA Units award)

SPECIAL EDUCATIONAL NEEDS

All of our pupils have Special Educational Needs and we are fully compliant with the requirements of the SEN and Disability Act 2001 and the SEN Code of Practice. We recognise that many of our pupils will have SENs in more than one area of need. We offer specialist support for pupils with mild learning difficulties and dyslexia and will work closely with specialists and other agencies to deliver support in other areas e.g. Speech and Language and dyspraxia. Our SEN Policy can be read in full on the website www.kingsdownsse.com

ADMISSIONS

The school is a small registered Independent Special School for girls and boys with Social, Emotional and Behavioural difficulties. The majority of pupils will have statements of Special Educational Needs or Education Health and Care Plans, although pupils can be admitted without these if appropriate. Many of our pupils are Children in Care and the school is developing this specialism.

Pupils are funded by their home Local Authorities and pupils will normally only be admitted if the placing LA's SEN Department authorises the placement. Occasionally pupils may be admitted as a result of their placement in Croydon by social care agencies but the school would always seek to work closely with the LA Education departments in these cases.

When a LA refers a pupil to Kingsdown we will always read the paperwork carefully and if we think we can meet the pupil's identified SEN we will offer a visit to the pupil, his/her parent/carer and other involved professional. If the visit is successful an offer of a place will be sent to the referring Local Authority and a start date offered once final agreement has been received. It is unlikely that the school can make appropriate provision for pupils with EAL needs unless they are fluent in English.

PARENT/CARER INVOLVEMENT

We believe that we can maximise pupils' chances of success by working in close partnership with parents/carers. We welcome informal contact at any time and are always happy to discuss any aspect of a child's attendance, behaviour and progress. If we encounter a problem we contact parents/carers quickly to try and resolve matters either over the phone or by calling a meeting. Where parents/carers cannot come to the school the head teacher may arrange a Home Visit.

We phone home weekly with details of pupils' attitude and behaviour. All pupils receive a full written termly report. We hold a Parents' Consultation afternoon twice a year when parents/carers can speak to all of their child's teachers.

Parents/carers are always invited to IEP and statement review meetings and receive a copy of all the documentation from these meetings. Parents also receive a termly target sheet which shows how targets for each subject support the overall IEP targets.

Pupils are set homework and we encourage parent/ carers to support their child/ward to complete it to the best of their ability.

If any parent/carer has any sort of disability they are requested to let the school know and we will do everything we can to enable them to support their child and take a full part in the life of the school.

Many of our pupils are Looked After by a Local Authority and in these cases we attend and send reports to LAC Reviews and other meetings and ensure Social Workers are kept fully involved. The school has a designated teacher for Children in Care who can be contacted via the school administrator if any further information is needed.

All the school policies are available on the school website at www.kingsdownsse.com. Alternatively parents are always welcome to ring the school and request a hard copy to be sent. Parents may be particularly interested in the school's anti - bullying, child protection (safeguarding), health and safety, behaviour management, positive handling and the policy on the searching and screening of pupils for weapons policies. Summaries of the suite of policies on behaviour and the equalities, sex and relationship and drugs policies are also available.

TIMES OF THE SCHOOL DAY

Kingsdown School opens at 8.25am: we serve a breakfast of toast and a drink from 8.25am until 8.45am.

School Day

8.25 – 8.45	Informal tutorials
8.45 – 10.40	Periods 1- 3
10.40 – 10.55	Break – drink and a snack of fruit and yoghurt
10.55 – 12.55	Periods 4 – 6
12.55 – 1.30	Lunch – a freshly cooked meal is available for everyone at no additional cost.
1.30 – 3.15	Periods 7, 8 and 9
3.15pm	School ends

Friday – School ends after lunch at 1.30pm

CURRICULUM

The taught curriculum at Kingsdown mirrors the National Curriculum and wherever possible leads to public accreditation – GCSE, BTEC level 2 and Entry Level. We are committed to the delivery of the five Every Child Matters outcomes and our informal curriculum (delivered through Assemblies, in unstructured time and through a range of enrichment activities and outings) is designed to support pupils in staying safe, being healthy, enjoying and achieving, making a positive contribution and achieving economic well being. The informal curriculum is delivered to the whole school community but the academic curriculum is taught in year classes. Classes are small and this enables work to be matched to individual pupil need and gives them a high level of individual attention.

In Key Stage 3 all pupils study English, Maths, ICT, Science, and Humanities, Food technology PSHE, PE and Games. When possible we also offer practical projects such as cookery and gardening. The exact curriculum will be personalised to meet individual needs. Pupils with literacy difficulties can be offered 1 to 1 withdrawal support up to three times per week.

In Key Stage 4 all pupils study English, Maths, ICT, Science, PSHE, and Food technology, Vocational, PE and Games. Literacy support continues in KS4. Again all timetables are personalised as far as possible to meet individual pupil need and we will put individuals forward for Work Experience placements and College courses if appropriate. In KS4 we endeavour to ensure all pupils are fully aware of their post 16 options and are supported to make appropriate options.

Homework is set regularly. We believe it is vital that all pupils complete it to the best of their ability because it encourages independent learning and allows pupils to deepen their understanding of topics covered in class.

ATTENDANCE & BEHAVIOUR

At Kingsdown we believe that regular and punctual attendance are vital and can help establish good patterns for the future.

We recognise that many of our pupils have had a disrupted educational history and may have got out of the habit of coming to school regularly. We aim to support improvement by making the school a welcoming place and by acknowledging and rewarding good attendance.

We operate a first day of absence calling policy and parents/carers are contacted by 9.30 every day that their child/ward does not attend. We do authorise absence on medical grounds and also when pupils have unavoidable meetings and appointments elsewhere. We do however encourage other agencies to hold meetings outside school hours wherever possible and when this is not possible to hold the meeting here at Kingsdown so that we can minimise disruption to learning.

We liaise with Education Welfare Services whenever unauthorised absence becomes an issue.

Our Attendance Policy can be read in full on our website www.kingsdownsse.com

At Kingsdown our Behaviour Policy underpins everything we do. It is reviewed and updated regularly in line with best practice. It is based on the principles of positive behaviour management and wherever possible we reward desired behaviours rather than sanctioning poor behaviour. We also have related policies on Screening and Searching for Weapons, Anti-Bullying and Positive Handling. All these policies can be read in full on the website but we have prepared a leaflet for parents/carers summarising the policies and a copy of that is included in this pack.

Our staff are trained in positive Behaviour Management and positive handling (team teach).

THE GOVERNING BODY

Gordon Smith, Chair of Governors

Gordon Smith is the Principal at Riddlesdown High school a local secondary school of 1900 pupils and students.

He is Chair of the Central and South Croydon 14 -19 Partnerships as well as Vice Chair of Governors at Croydon College.

Gordon's work in a range of London Schools means that he has a clear understanding of educational and leadership issues which contributes to Kingsdown.

Kevin Henry

Kevin spent the first 16 years of his working life in the Manufacturing sector working as an apprentice Electrician before becoming a Control Engineer. He gained an HTC in Electrical and Electronic Engineering before completing a BEng (Hons) in the same subject. Kevin undertook an MBA at South Bank University, completing his dissertation in 1995.

In 1994, Kevin changed career path and began running McRae Residential Care Services (MRCS) Ltd, a small family business providing residential care for 'looked after children'. Having had the benefit of a good education himself, Kevin was determined to provide educational opportunities for the young people in MRCS' care and began the journey in 1999 into what was to become Kingsdown School.

Kevin became a business governor for Croydon College in August 1997, Vice Chair in 2001 and Chair in August 2005.

In addition to his interest in MRCS Ltd and Croydon College, Kevin is also a Director of Focused Fostering Services Ltd.

Barbara Round

Barbara Round retired in 2003 after a long and happy career in teaching, the final 24 years of which she spent as First Deputy Head of Riddlesdown High School. Barbara read Modern Languages at Exeter and gained her teaching diploma at the University of London Goldsmiths. She spent a year teaching in Germany and also taught in Brixton at Stockwell Manor School.

Barbara and her husband Michael fostered a number of teenagers, now all grown up with their own families. She continues to have wide interests in education.

Donald Mann

At the age of 18 Donald was commissioned in what is now the Royal Logistics Corps. On leaving the army he qualified as a teacher in the secondary sector. After holding posts as Year Head and Head of Department he was, in 1971, appointed Deputy Head of Ashburton High School in Croydon. This post, including a short time as Acting Head, he held until his retirement in 1988.

For many years he represented the staff of Ashburton on the governing body and was also a governor of Woodcote primary school. As a result of interest in examining policies in relation to secondary schools, he represented Croydon for a number of years on a Certificate of Secondary Education examining panel and eventually became chairman of that panel.

PTO

Heather Mann

Heather gained her B.Ed (Hons.) in Education and Religious Studies in 1980. In the same year, she was appointed to the post of Religious Studies teacher in Ashburton High School, Croydon. She eventually became Head of Religious Studies in the same school and concurrently held the posts of Year Head and Teacher Governor.

In 1990, she was appointed Head of Department in Greenacres Independent School for Girls. During her time there, she became Head of Humanities and later a member of the Schools Management Team. She taught R.S. to Advanced Level (including boys from Ewell Castle School) and was also responsible for creating policies related to bullying and Special Educational Needs.

Whilst at Greenacres, she embarked upon a four year part-time study related to Therapeutic Counselling. In 2003 she was awarded the Advanced Diploma in Therapeutic Counselling.

In that same year, she was obliged to take retirement as a result of cancer.

Susan Hunter

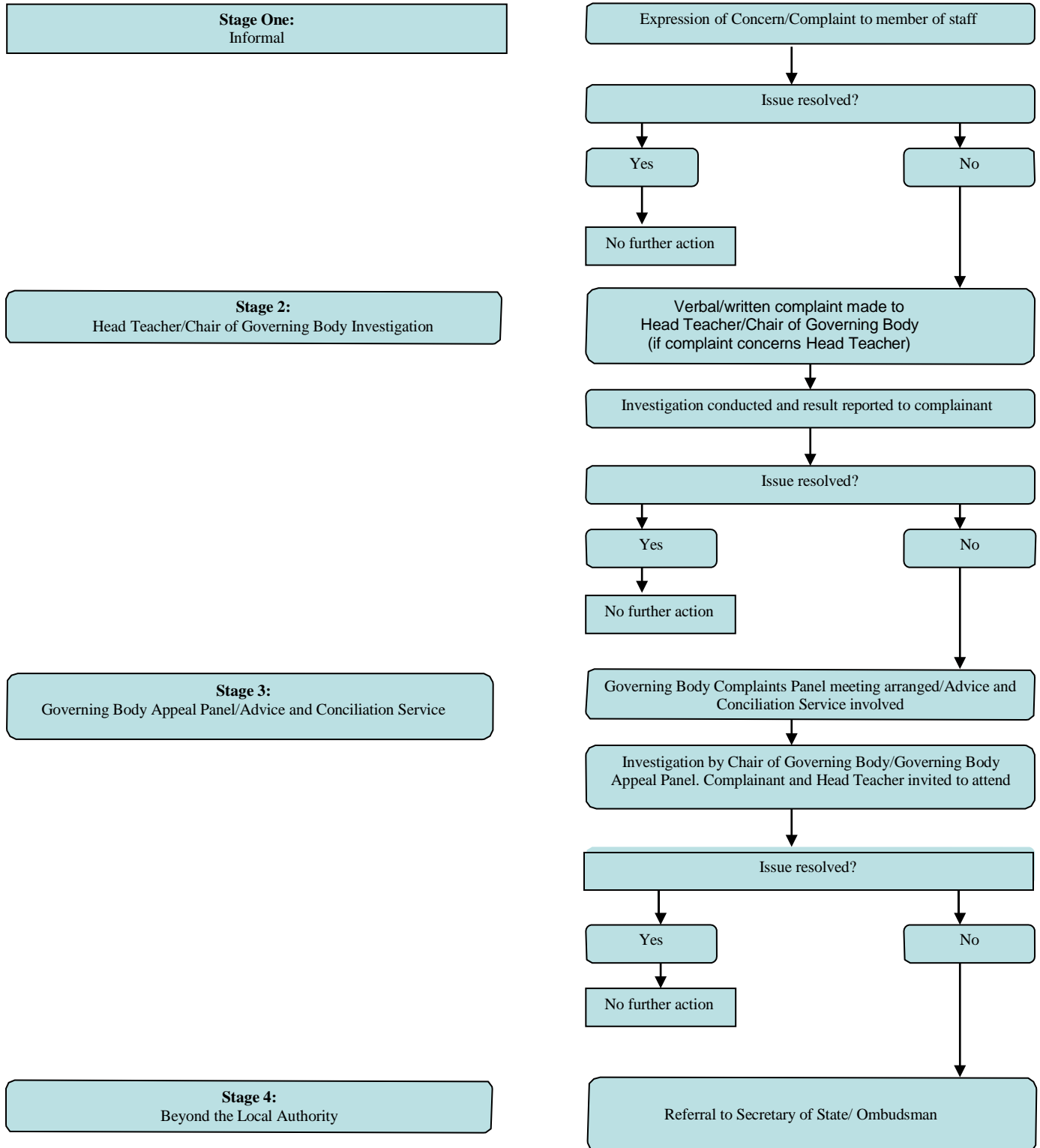
Between 1990 - 2008 Susan was Head of Work Related Learning within Greenwich Children's Services and from 2008-2012 held a similar post within the Council's Directorate of Regeneration, Enterprise and Skills.

She chaired the pan London Work Related Learning network for many years and was also a member of the DfE's national work experience advisory group for more than a decade.

Prior to 1990 Susan taught History to A level in a number of Surrey schools.

COMPLAINTS

We hope you will not need to complain about our school – if you do ever have a problem with our service we encourage you to contact us at once and we will do our best to resolve matters. However if you do wish to make a formal complaint please see the flow chart below. A full copy of our Policy can be seen on the website or if you request it we will send it to you by post.



STAFF LIST

Principal: **Kevin Henry** OBE
MBA, BENG (Hons)

**Head of school:
& ICT** **Yusif Assim**
BA Hons Geography; Dip Ed. , MSc Computing & Information
Systems QTS (England)

Leadership Partner: **Cheryl Butler**
MA (cantab) PGCE

Head of Welfare: **Stephanie Henry**
BSC Combined Hons in Business; Administration and French.

**Head of English Dept:
& senior teacher** **Meera Jankee**
BA Psychology: Cert.Ed. Dip. Ed;
BSc Sociology & English; SELTA

Head of Maths Dept: **Augustine Sesay**
BSc & PGCE

Head of Science Dept: **Stephen Thompson**
B.Ed in Physics and Chemistry

PE teacher: **Luke Brownford**
DTLLS, NVQ level 1 in sports recreation and Allied Occupations Cert
BTEC National Diploma

Food Technology teacher: **Valerie Laville**
B.A. Food Technology

Art teacher: **Angela Mikellides**
BA Hons Fine Art

Literacy/HLTA: **Angela Mikellides**
BA Hons Fine Art

Learning support teacher: **Francis Okoli**
BA Hons

Learning support teacher: **Janice Wilson**
NVQ level 3 in Health and Social Care (Children and Young People)

Learning support teacher: **Malik Owusu**
Bsc Sociology, Diploma Audio production, BTEC Media,
AVCE Advanced ICT, GNVQ Intermediate ICT

School Administrator: **Lisa Courtney**

Site Manager: **Mark Courtney**